

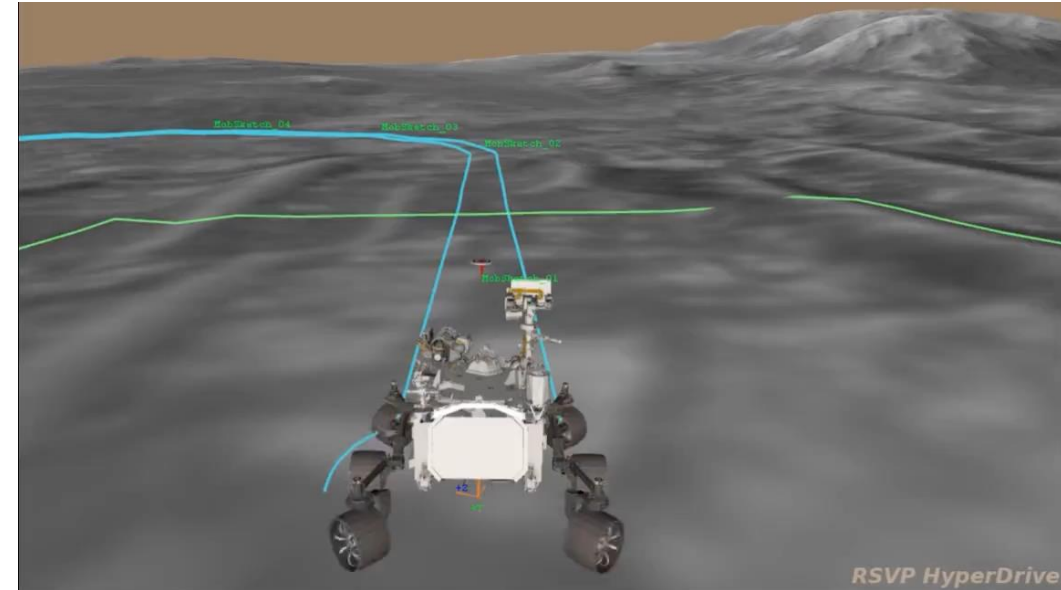
IA: IL TEMPO STRINGE.

**L'INDUSTRIA EUROPEA TRA
ACCELERAZIONE TECNOLOGICA E SCELTE
STRATEGICHE**

9 DICEMBRE 2025

FOUR HUNDRED METERS *on* MARS

The first AI-planned drive on another planet.



Over **500,000 variables** were modeled to check the projected positions of the rover and predict any hazards along its route.

“Autonomous AI systems could help probes explore ever more distant parts of the solar system.”

<https://www.jpl.nasa.gov/news/nasas-perseverance-rover-completes-first-ai-planned-drive-on-mars/>

3 GENNAIO 2026



“Claude was deployed during the active mission itself, not merely in preparatory planning phases, processing real-time intelligence data as American forces executed the raid”



According to the Pentagon official, the Palantir executive “was alarmed that the question was raised in such a way to imply that Anthropic might disapprove of their software being used during that raid.”

26 FEBBRAIO 2026



- Mass surveillance targeting domestic population
- Development or deployment of fully autonomous weapons without human oversight



- **“Supply Chain Risk”**
 - Potential system vulnerabilities
 - Security risks in critical infrastructure
 - Foreign influence or espionage concerns

28 FEBBRAIO 2026



US military reportedly used Claude in Iran strikes despite Trump's ban

New York Times

The defense secretary also gave a nod to the difficulty of rapidly detaching military systems from the AI tool, given how widely used it has become. He said that Anthropic would continue to provide services ***“for a period of no more than six months to allow for a seamless transition to a better and more patriotic service”***



When
Com

How n
annua

Global

40,000

35,000

30,000

25,000

20,000

15,000

10,000

5,000

0

Source: C
for Scien

CGTN



Cina: Leadership AI Globale 2025-2030

Strategia di investimento e fattori chiave di successo



\$84-98 Mld +48%

INVESTIMENTI AI 2025

6 Nuovi Unicorni

STARTUP E AI TIGERS

Fondi Strategici Dedicati

COLLABORAZIONE STATO-PRIVATO



6 Pilastri della Leadership AI Cinese

POPOLAZIONE & DATI

1,4 miliardi di persone e oltre 1,1 miliardi di utenti digitali generano dati costantemente

TALENTO & FORMAZIONE

Le migliori università cinesi sono fucine di talenti e startup innovative

CAPACITÀ DI CALCOLO

Investimenti massicci in data center e infrastrutture energetiche (Pechino: \$2,1 Mld)

BREVETTI & INNOVAZIONE

Oltre 1,5 milioni di brevetti AI, pari al 40% del totale globale

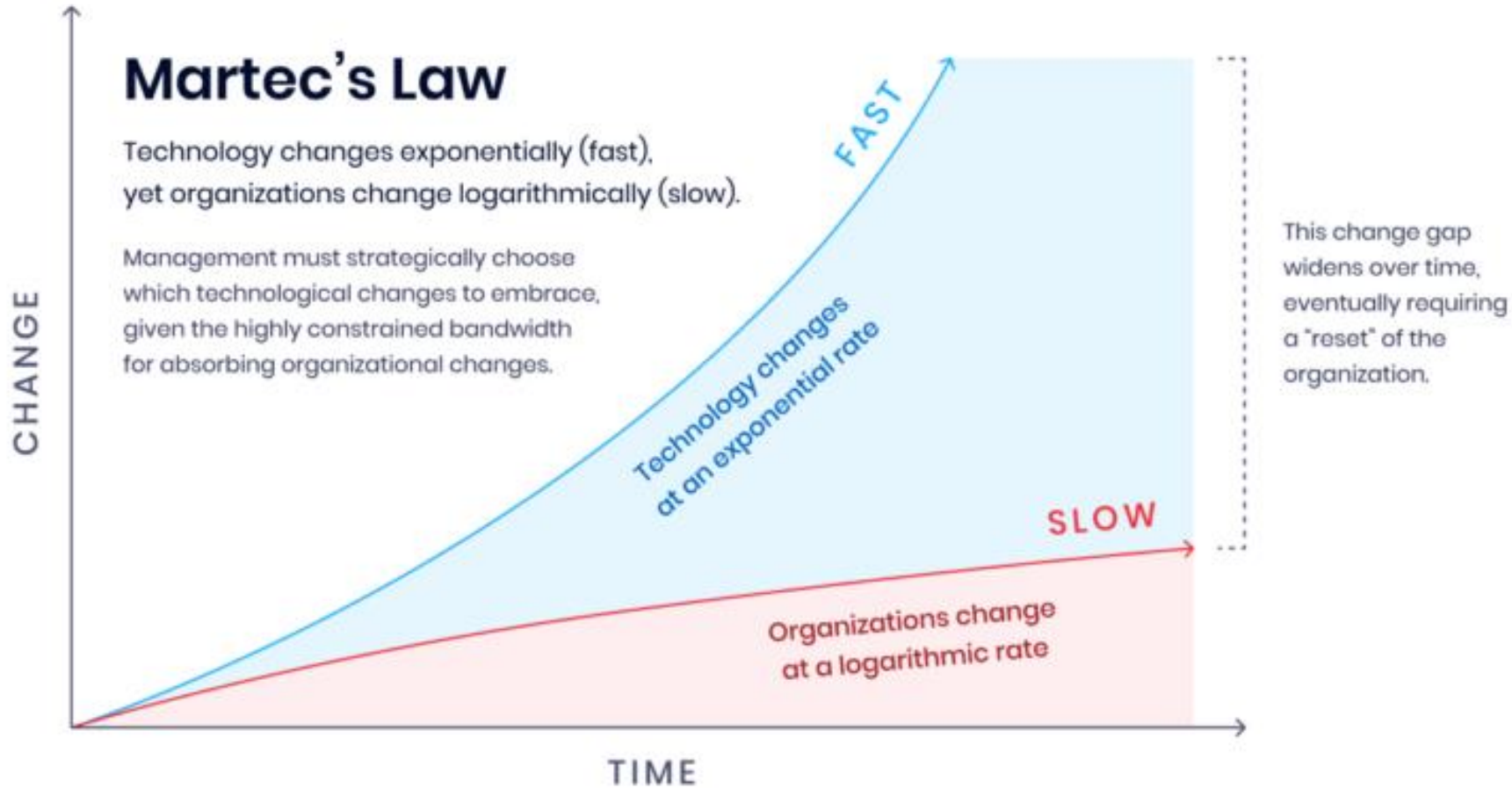
ADOZIONE RAPIDA

250 milioni di utenti di AI generativa già nel 2025

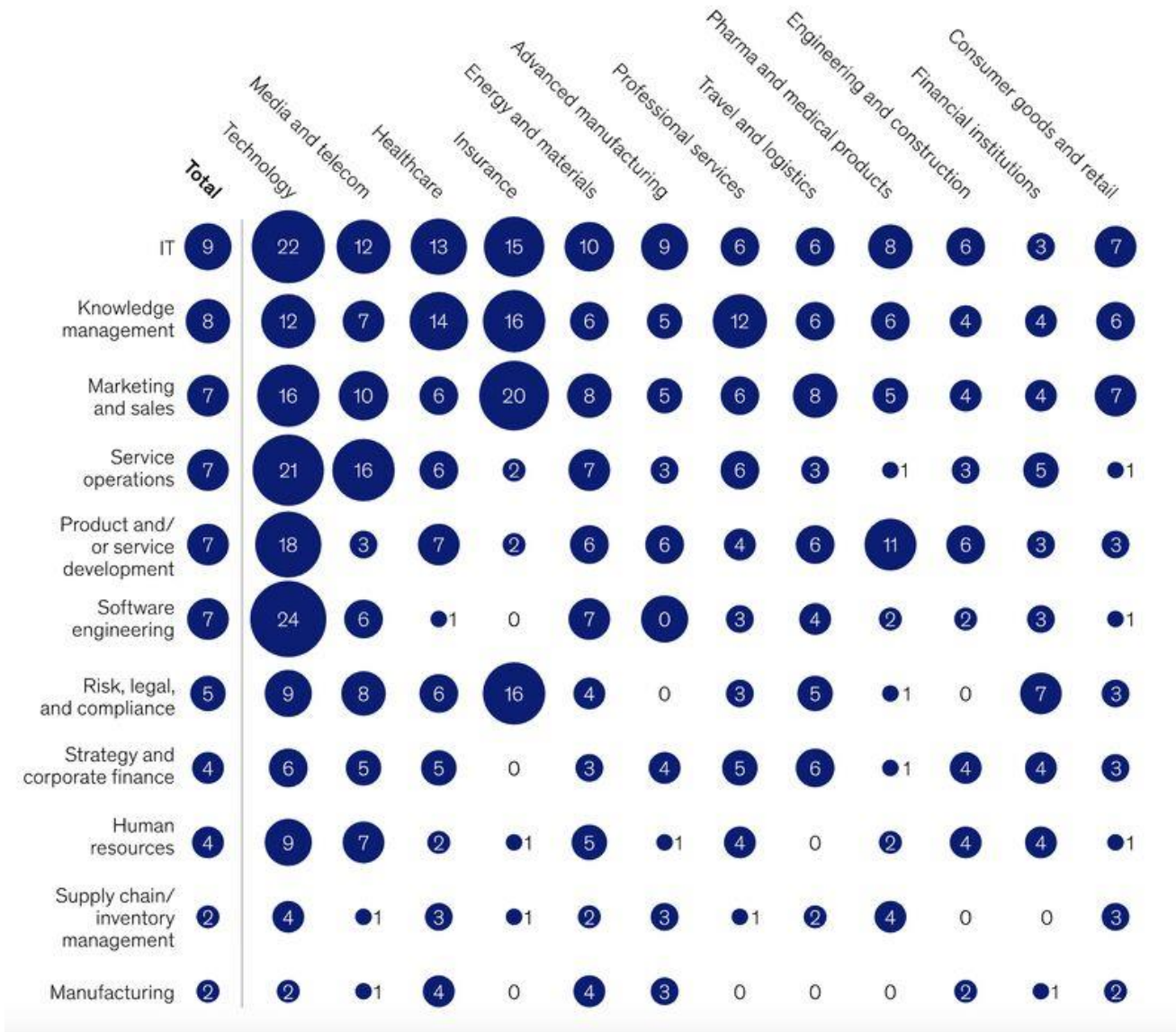
ALLINEAMENTO STRATEGICO

Coordinamento tra governo, mercato e accademia accelera sviluppo e applicazione

L'ADOZIONE DELLE ORGANIZZAZIONI



L'ADOZIONE DELLE ORGANIZZAZIONI



“Most organizations are still in the experimentation or piloting phase: Nearly two-thirds of respondents say their organizations have not yet begun scaling AI across the enterprise”

“High curiosity in AI agents: Sixty-two percent of survey respondents say their organizations are at least experimenting with AI agents.”

McKinsey

The state of AI in 2025: Agents, innovation, and transformation – Novembre 2025

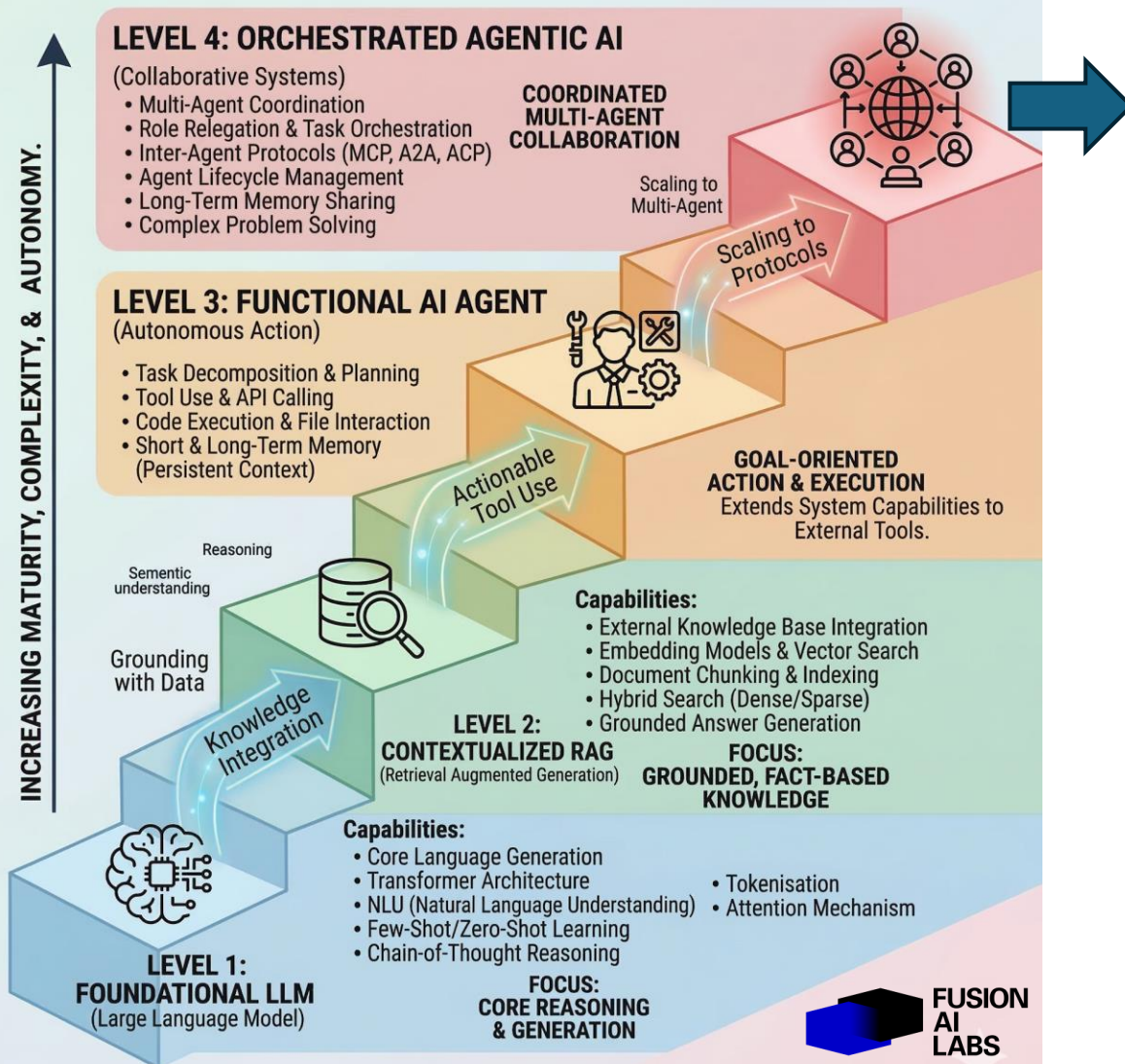


AI agent use that has reached the scaling phase,¹ by industry and business function, % of respondents

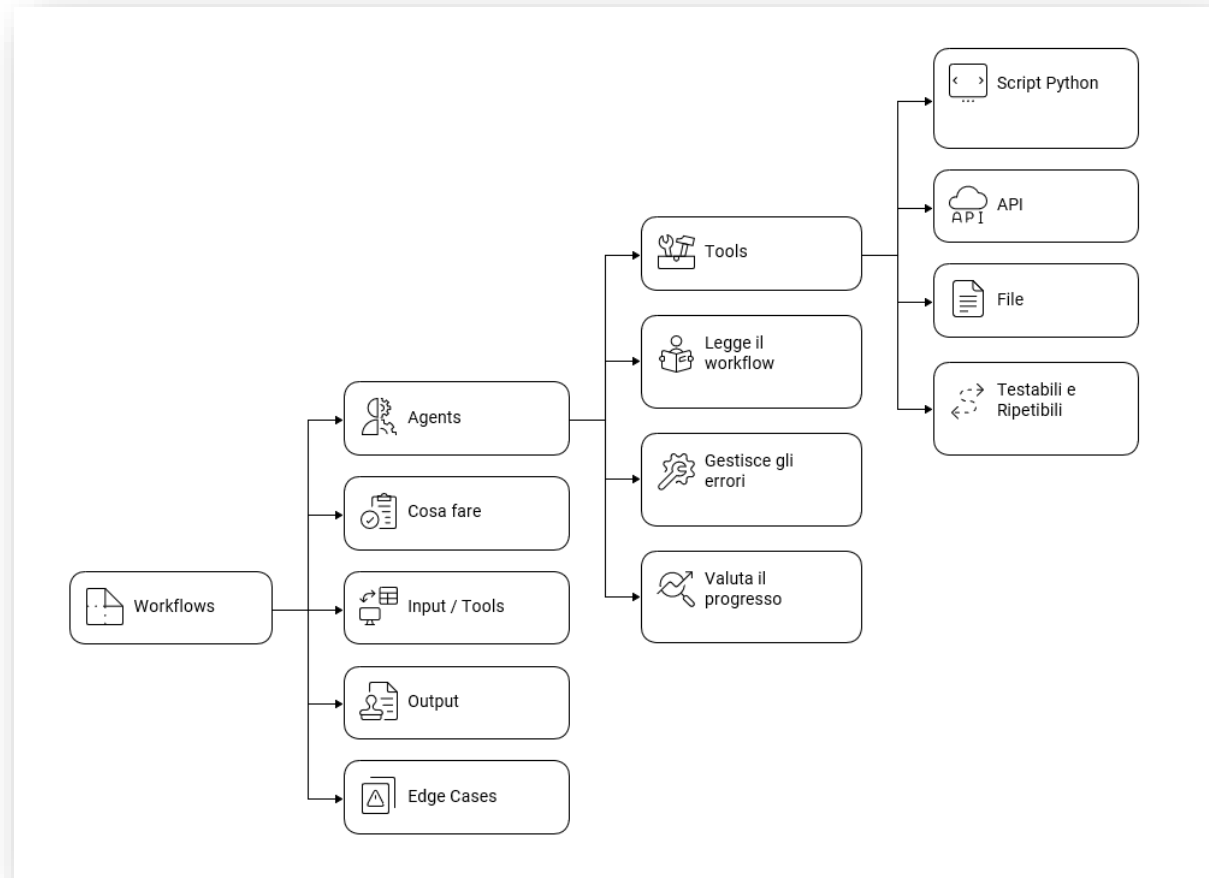
THE AI MATURITY PROGRESSION:

FROM FOUNDATIONAL REASONING TO COORDINATED ORCHESTRATION.

A CLEARER, LINEAR EVOLUTION OF AI CAPABILITIES.



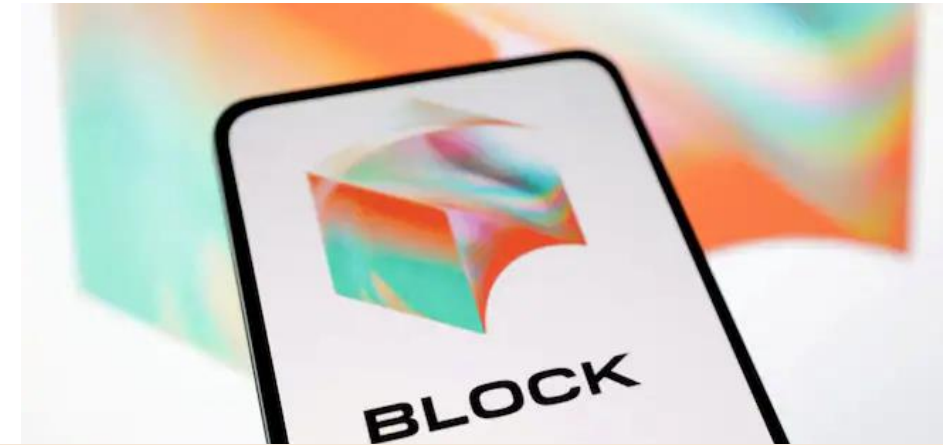
Il **WAT Framework** (Workflows, Agents, Tools) è un approccio strutturato per progettare sistemi di Intelligenza Artificiale basato sul principio cardine: "**Separate Thinking and Execution**" (Separare il pensiero dall'esecuzione).



SCENARI DI APPLICAZIONE E ACCELERAZIONE



"In Anthropic 90% to 100% of our products are developed by Claude"



Jack Dorsey fires 40 per cent of Block employees: 'AI will change the way the company is run'

4 thousand redundancies announced out of 10 thousand workers

In 2025 Block reported \$10.36 billion in gross profit, up 17% year-on-year, with quarterly revenues exceeding expectations

EUROPA E ITALIA



LA UE eccelle nella ricerca scientifica ma fallisce nel trasformarla in innovazioni commerciali



Investimento Ricerca e Sviluppo (R&S) – **1,3% PIL**
(Obiettivo UE 3%, media UE 2,2% - Germani 3,1% USA 3,4%)

Come viene finanziata:

Settore privato **53%** (Corea / Giappone 80%, Germania 68%)

Cosa si finanzia:

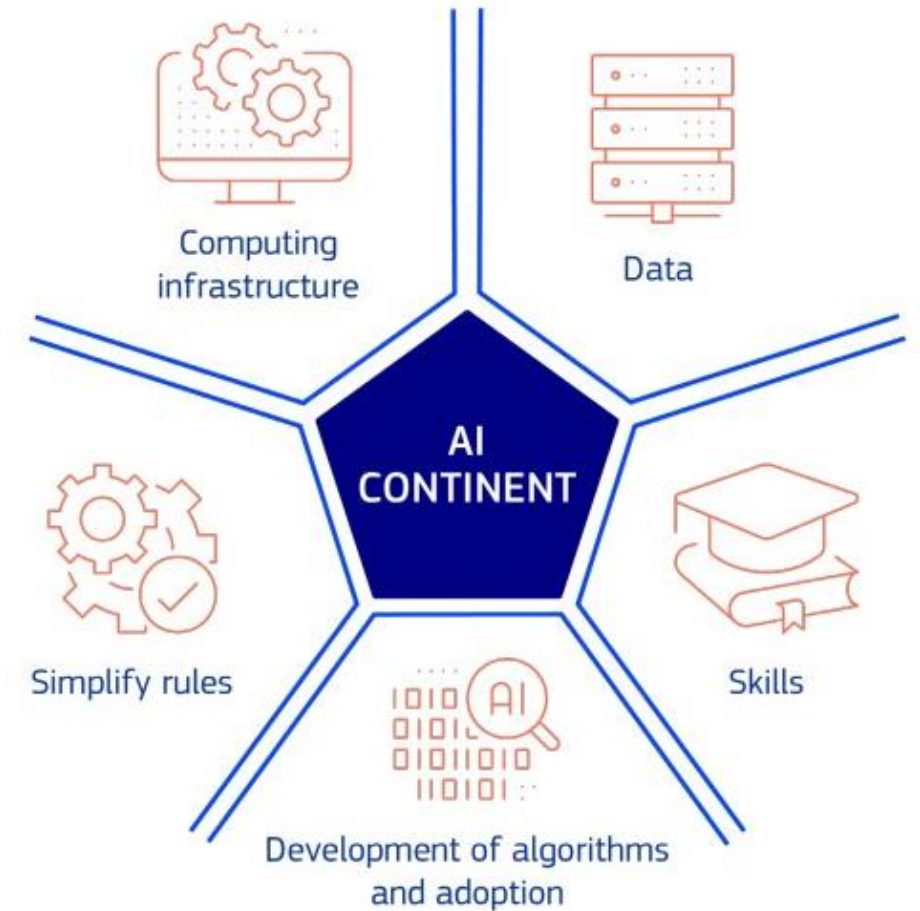
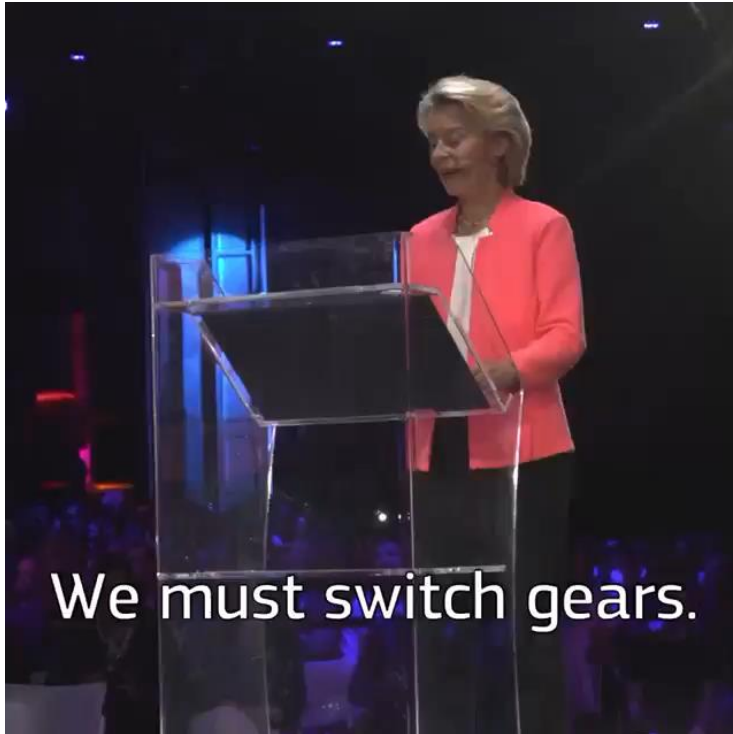
Ricerca prevalentemente «tradizionale» (Non digital, o Deep tech)

Brevetti EPO per mln abitanti:

Italia circa 80 - Media UE 150 – Germania 300, Svezia 450

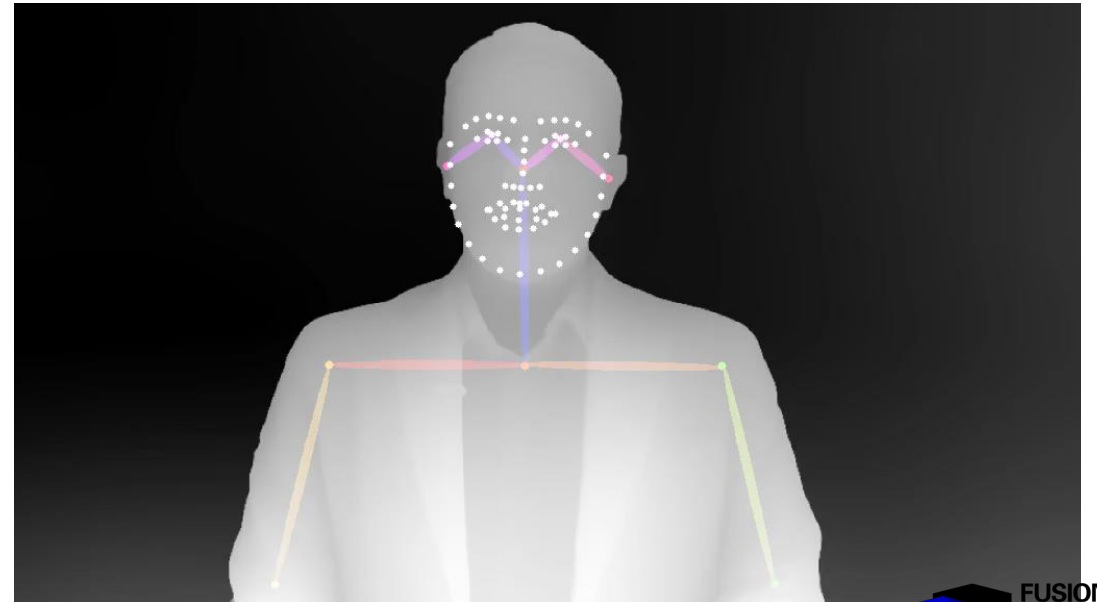
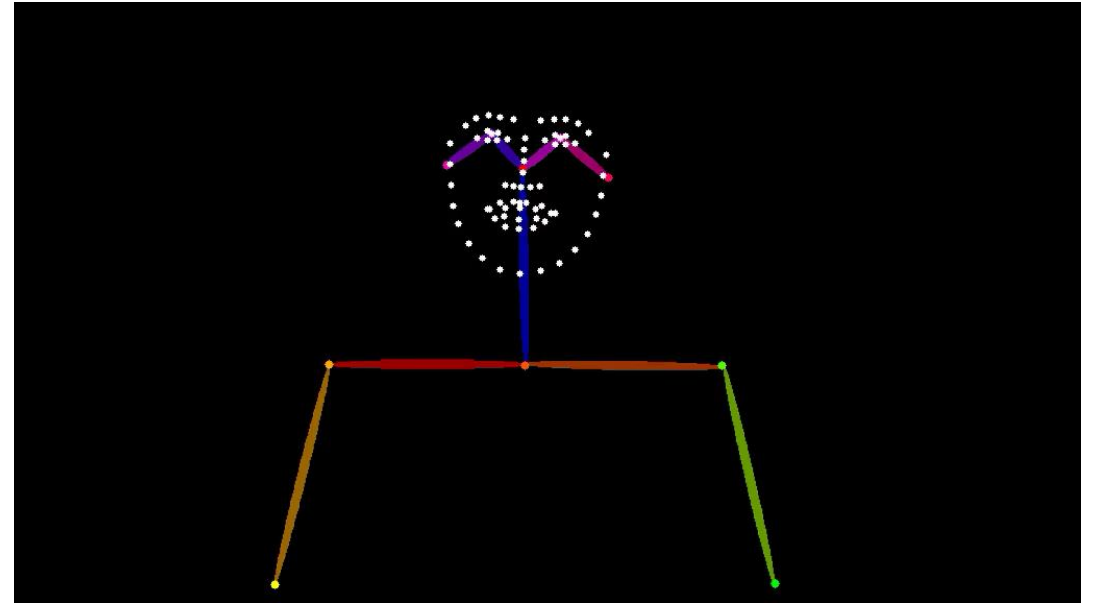
Settori Deep Tech vivono di **Ricerca applicata**

TOWARDS THE CREATION OF THE AI CONTINENT



LA POTENZA È NULLA SENZA CONTROLLO (HAVING FUN...)





La ricerca applicata è il ponte tra l'idea e l'impatto.

In un'era di cambiamenti rapidi e radicali, l'immobilismo è il rischio più grande. Abbiamo il talento, ora serve il coraggio: smettiamo di osservare l'intelligenza artificiale e iniziamo a costruirla.

Il valore di domani appartiene a chi ha il coraggio di cambiare oggi

